

---

# LA MOHAIR

CATALOGUE OF PRODUCTS



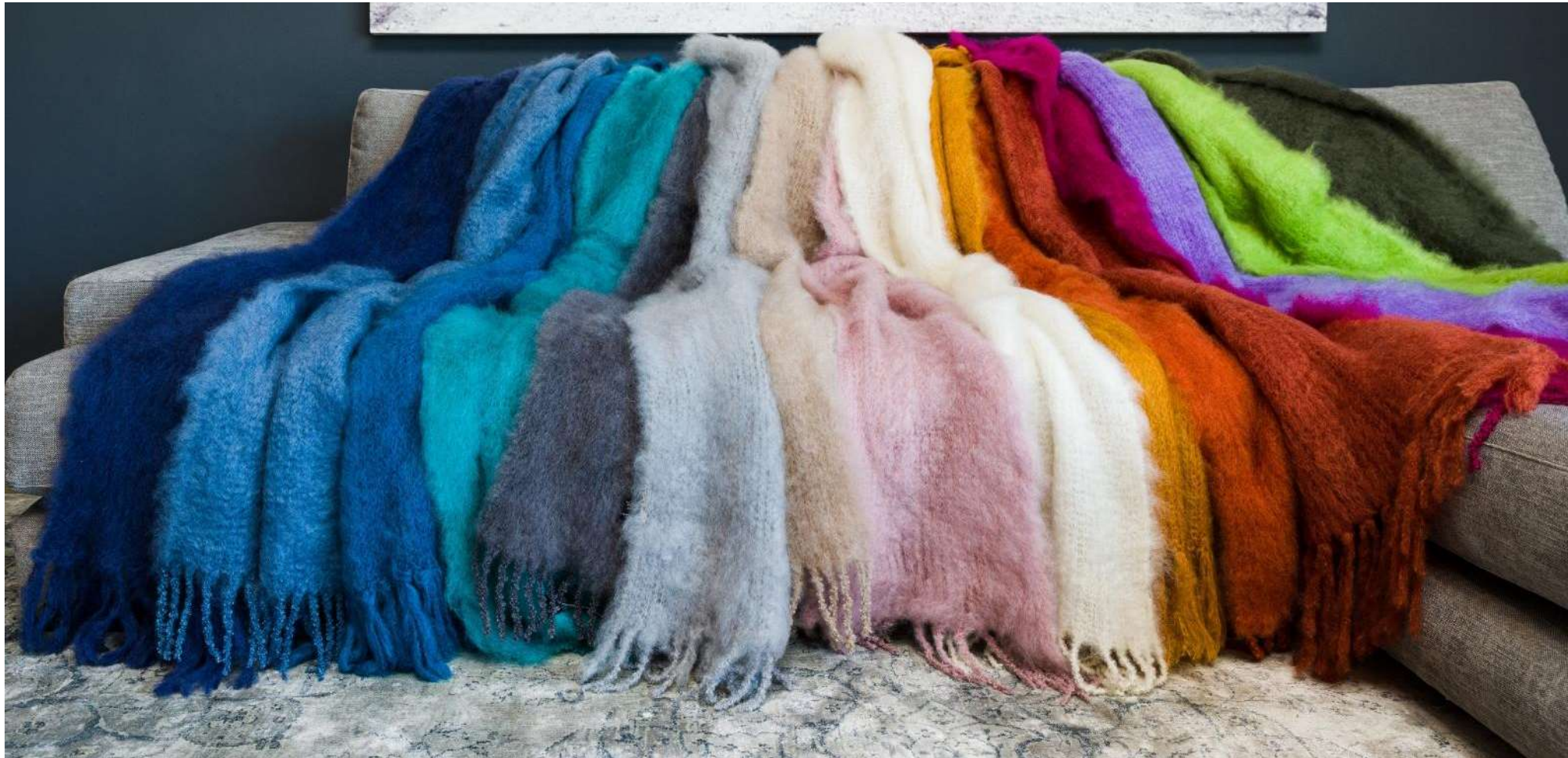
*La Mohair*

[www.lamohair.co.za](http://www.lamohair.co.za)

LA MOHAIR

Hand woven / loomed / knitted

# LA MOHAIR



Hand woven / loomed

## BLANKETS / THROWS

Size 115 x 180cm (approx.) Weight 950g (approx.)

Throw (chocolate)



Throw (dark grey)



Throw (light grey)



Composition: 78% Kid Mohair, 13% Wool, 9% Nylon Binder



Hand woven / loomed

# BLANKETS / THROWS

Size 115 x 180cm (approx.) Weight 950g (approx.)

Throw (pine)



Throw (dusty pink)



Throw (red)



Composition: 78% Kid Mohair, 13% Wool, 9% Nylon Binder

Hand woven / loomed

## BLANKETS / THROWS

Size 115 x 180cm (approx.) Weight 950g (approx.)

Throw (light grey)



Throw (pink)



Throw (red)



Composition: 78% Kid Mohair, 13% Wool, 9% Nylon Binder

Hand woven / loomed

# BLANKETS / THROWS

Size 115 x 180cm (approx.) Weight 950g (approx.)

Throw (denim)



Throw (rust)



Throw (ecru)



Composition: 78% Kid Mohair, 13% Wool, 9% Nylon Binder

Hand woven / loomed

# BLANKETS / TROWS

Size 115 x 180cm (approx.) Weight 950g (approx.)

Throws (multi)



Throws (red)



Throw (multi)



Composition: 78% Kid Mohair, 13% Wool, 9% Nylon Binder



Hand woven / loomed

**BLANKETS / TROWS** Size 115 x 180cm (approx.) Weight 950g (approx.)



Composition: 78% Kid Mohair, 13% Wool, 9% Nylon Binder



Hand woven / loomed

## CUSHION COVERS

Size 50 x 50cm (approx.) Weight 200g (approx.)

Cushion cover (pine)



Cushion cover (taupe)



Cushion cover (ecru)



Composition: 78% Kid Mohair, 13% Wool, 9% Nylon Binder

Hand woven / loomed

## CUSHION COVERS

Size 50 x 50cm (approx.) Weight 200g (approx.)

Cushion cover (grey)



Cushion cover (eggplant)



Cushion cover (denim)



Composition: 78% Kid Mohair, 13% Wool, 9% Nylon Binder

Hand knitted

**SCARF / SHAWL** Size 35 x 160cm (approx.) Weight 200g (approx.)

Scarf (carmine rose)



Scarf (dark grey)



Scarf (blue)



Composition: 78% Kid Mohair, 13% Wool, 9% Nylon Binder



Hand knitted

**SCARF / SHAWL** Size 35 x 160cm (approx.) Weight 200g (approx.)

Scarf (bottle green)



Scarf (burnt orange)



Scarf (chestnut)



Composition: 78% Kid Mohair, 13% Wool, 9% Nylon Binder

Hand knitted

**SCARF / SHAWL** Size 35 x 160cm (approx.) Weight 200g (approx.)

Scarf (cinnamon)



Scarf (dark blue)



Scarf (dark grey)



Composition: 78% Kid Mohair, 13% Wool, 9% Nylon Binder

Hand knitted

**SCARF / SHAWL** Size 35 x 160cm (approx.) Weight 200g (approx.)

Scarf (taupe)



Scarf (royal blue)



Scarf (black)



Composition: 78% Kid Mohair, 13% Wool, 9% Nylon Binder



Hand knitted

**SCARF / SHAWL** Size 35 x 160cm (approx.) Weight 200g (approx.)

Scarf (dusty pink)



Scarf (ecru)



Scarf (hickory)



Composition: 78% Kid Mohair, 13% Wool, 9% Nylon Binder

Hand knitted

**SCARF / SHAWL** Size 35 x 160cm (approx.) Weight 200g (approx.)

Scarf (light grey)



Scarf (lime green)



Scarf (mustard)



Composition: 78% Kid Mohair, 13% Wool, 9% Nylon Binder

Hand knitted

**SCARF / SHAWL** Size 35 x 160cm (approx.) Weight 200g (approx.)

Scarf (olympic)



Scarf (pine)



Scarf (red)



Composition: 78% Kid Mohair, 13% Wool, 9% Nylon Binder



Knitted

# SILKY OVERSIZE SHAWL

Size 70 x 200cm (approx.) Weight 160g (approx.)

Silk Shawl (dusty pink)



Silk Shawl (light grey)



Silk Shawl (ecru)



Composition: 72% Kid Mohair, 28% Mulberry Silk

Knitted

# LACY SCARF

Size 40 x 170cm (approx.) Weight 130g (approx.)

Lacy Scarf (white)



Lacy Scarf (dusty pink)



Scarf (light grey)



Composition: 79% Kid Mohair, 21% Polyamide

Knitted

# LACY SCARF

Size 40 x 170cm (approx.) Weight 130g (approx.)

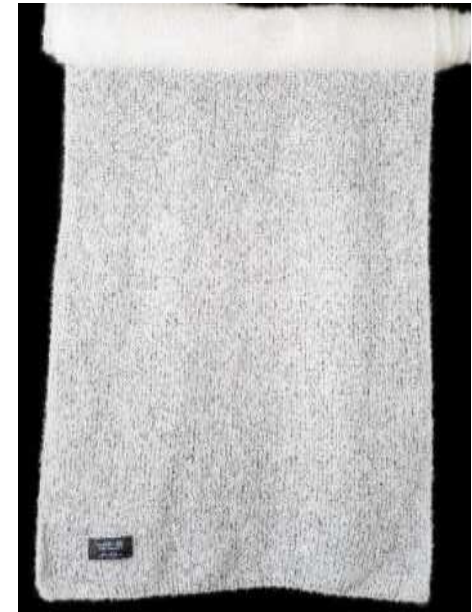
Lacy Scarf (white)



Lacy Scarf (lime)



Scarf (white)



Composition: 79% Kid Mohair, 21% Polyamide

Hand knitted

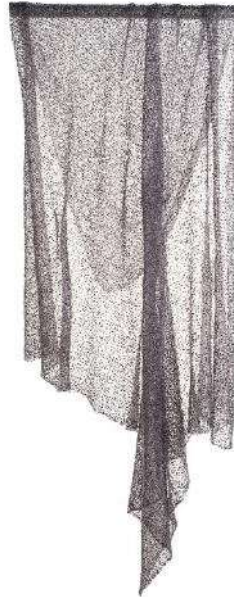
# LIGHTWEIGHT SCARF

Size 130 x 130cm (approx.) Weight 100g (approx.)

Scarf (light grey)



Scarf (dark grey)



Scarf (aqua)



Composition: 79% Kid Mohair, 21% Polyamide



Hand knitted

# LIGHTWEIGHT SCARF

Size 130 x 130cm (approx.) Weight 100g (approx.)

Scarf (lime)



Scarf (black)



Scarf (white)



Composition: 79% Kid Mohair, 21% Polyamide

Hand knitted

# SCARF OSTRICH FEATHERS

Size 40 x 200cm (approx.) Weight 250g (approx.)

Scarf (black)



Scarf (ecru)



Composition: 78% Kid Mohair, 13% Wool, 9% Nylon Binder

Hand knitted

# SCARF OSTRICH FEATHERS

Size 35 x 160cm (approx.) Weight 200g (approx.)

Scarf (dark grey)



Scarf (taupe)



Composition: 78% Kid Mohair, 13% Wool, 9% Nylon Binder

Hand woven

# WOVEN CAPE

One Size Weight 600g (approx.)

Cape (taupe)



Cape (light grey)



Composition: 78% Kid Mohair, 13% Wool, 9% Nylon Binder



Knitted

**BEANIE** Size medium (approx.) Weight 60g (approx.)

Beanie (dusty purple)



Beanie (mustard)



Beanie (taupe)



Composition: 78% Kid Mohair, 13% Wool, 9% Nylon Binder

Knitted

**BEANIE** Size medium (approx.) Weight 60g (approx.)

Beanie (red)



Beanie (deep ocean)



Beanie (garden green)



Composition: 78% Kid Mohair, 13% Wool, 9% Nylon Binder

Knitted

**BEANIE** Size medium (approx.) Weight 60g (approx.)

Beanie (white)



Beanie (fluffy blue)



Beanie (light grey)



Composition: 78% Kid Mohair, 13% Wool, 9% Nylon Binder

Knitted

**BEANIE** Size medium (approx.) Weight 60g (approx.)

Beanie (ecru)



Beanie (dusty pink)



Beanie (grey)



Composition: 72% Kid Mohair; 28% Mulberry Silk



Knitted

# LACE SHAWL

Size medium (approx.) Weight 100g (approx.)

Lace (ecru)



Lace (ecru)



Lace (ecru)



Composition: 79% Kid Mohair; 21% Polyamide

Hand knitted

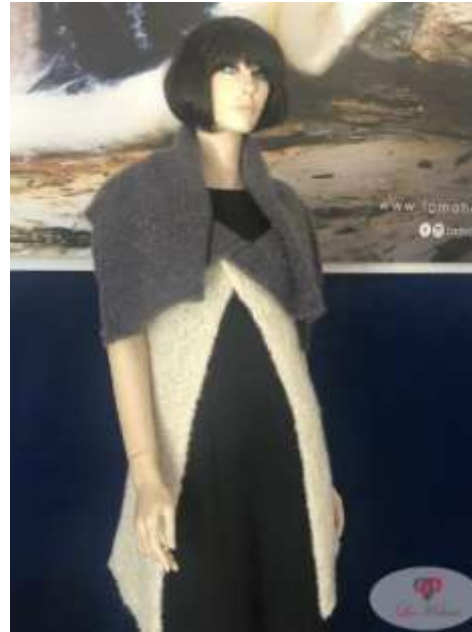
# KNITTED WRAP

Size medium (approx.) Weight 300g (approx.)

Wrap (dark grey & ecru)



Wrap (dark grey & ecru)



Wrap (multi)



Composition: 78% Kid Mohair, 13% Wool, 9% Nylon Binder

Hand knitted

# KNITTED SWEATER

Size medium (approx.) Weight 300g (approx.)

Sweater (dusty pink)



Sweater (light grey)



Sweater (light purple)



Composition: 78% Kid Mohair, 13% Wool, 9% Nylon Binder

Hand knitted

# OSTRICH FEATHER SHAWL

Size large (approx.) Weight 300g (approx.)

Ostrich Feather (ecru)



Ostrich Feather (ecru)



Ostrich Feather (ecru)



Composition: 78% Kid Mohair, 13% Wool, 9% Nylon Binder



Hand knitted

# FASHION GARMENTS

Size medium (approx.) Weight 400g (approx.)

Cardigan (red)



Cardigan (baby pink)



Cardigan (blue)



Composition: 78% Kid Mohair, 13% Wool, 9% Nylon Binder

Hand knitted

# FASHION GARMENTS

Size medium (approx.) Weight 400g (approx.)

Cardigan (taupe)



Cardigan (multi)



Cardigan (chestnut)



Composition: 78% Kid Mohair, 13% Wool, 9% Nylon Binder

# FASHION GARMENT

Size medium (approx.) Weight 200g (approx.)

Dress (lime)



Sweater (multi)



Sweater (multi)



Composition: 79% Kid Mohair, 21% Polyamide

Knitted

# FASHION PONCHO

Size medium (approx.) Weight 200g (approx.)

Poncho (light grey)



Poncho (dark purple)



Poncho (aqua)



Composition: 79% Kid Mohair, 21% Polyamide



Knitted

# FASHION PONCHO

Size medium (approx.) Weight 200g (approx.)

Poncho (lime)



Silky Poncho (olive) R 550



Poncho (aqua)



Composition: 79% Kid Mohair, 21% Polyamide

Knitted

# FASHION PONCHO

Size medium (approx.) Weight 200g (approx.)

Poncho (dusty pink)



Poncho (light grey)



Poncho (carmine rose)



Composition: 79% Kid Mohair, 21% Polyamide

Hand knitted

# FASHION COMBINATION

Size medium (approx.) Weight 200g (approx.)

Sweater & Scarf (purple)



Beret & Shawl (rust & ecru)



Beanie, Scarf, Sweater (multi)



Composition: 78% Kid Mohair, 13% Wool, 9% Nylon Binder



Hand woven / loomed / knitted

# LA MOHAIR





Hand woven / loomed / knitted

# SWATCHES



Swatch 001



Swatch 002



Swatch 003



Swatch 004



Swatch 005



Swatch 006



Swatch 007



Swatch 008



Swatch 009



Swatch 010



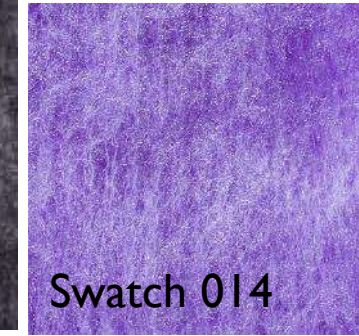
Swatch 011



Swatch 012



Swatch 013



Swatch 014



Swatch 015



Swatch 016



Swatch 017



Swatch 018



Swatch 019



Swatch 020



Swatch 021



---

## CONTACT

Larissa Primmer

[lprimmer@lamohair.co.za](mailto:lprimmer@lamohair.co.za)

084 583 2553

La Mohair

Proudly South African, Natural kid mohair garments

Shipped worldwide since 2013



- \*please contact us for min. order quantities.
- \*fabric colours are variable and subject to availability.
- \*custom colours may be arranged on request.
- \*weights may vary slightly according to density.

[www.lamohair.co.za](http://www.lamohair.co.za)